



OUR SPARK PRE FAB INSULATED EXPANDABLE CONTAINER TRANSPORTABLE

Size: 6600x5850*2700mm Size: 38.20 SQM

THREE BEDROOM with Bathroom and Kitchen



Option: Cladding and Gable Roof



Option for Gable Roof \$4000 extra, Material

4/16/2019

Page 1



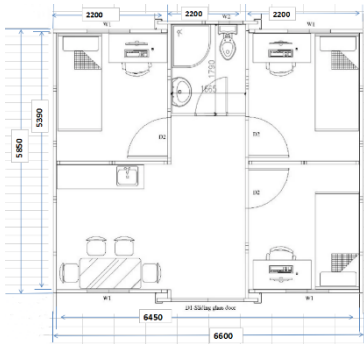
TRANSPORTABLE Expandable Container
3 Bedroom, Lounge, Kitchenette and Bathroom,
Size: 6600x5850*2700mm Size: 38.20 SQM

66,000 \$ +gst

FULLY INSULATED

Our Quality Homes are
Engineered & Built to stringent
Australian Building Codes

Option Cladding: 4,000\$ plus Gst



Pre Fab Container Expandable Container

- ✓ **Container:** 3 - 20 foot. Size: 6600x5850*2500mm Size: 38.20 SQM
- ✓ **Insulated Panels:** All panels 50mm are prefabricated
- ✓ **Steel Frames:** For transportable purpose.
- ✓ **Bed rooms:** 3 Bedroom shown in floor plans.
- ✓ **Bathroom:** 1 includes minimum 5 Star accessories, toilet suite,
✓ glass shower cubicle with flick mixer tap on vanity, plus shaving cabinet with mirror
- ✓ **Air condition:** 1 Air Condition in the lounge area only.
- ✓ **Bathroom Accessories:** Towel rack, tooth brush holder, toilet roll holder and robe hook.
- ✓ **Floor Plan:** As given in Floor Plan.
- ✓ **Walls & Roof** Prefab fully Insulated, high Eco Energy efficient white galvanized Colourbond Steel with EPS Insulated Sandwich Panel walls.
- ✓ **Roof:** Only Skillion Prefab fully Insulated, high Eco Energy efficient white galvanized Colourbond Steel with EPS Insulated Sandwich Panel
- ✓ **Doors:** As shown in floor plan with locks.
- ✓ **Windows:** As shown in floor plan with locks and fly screen.
- ✓ **Electrical:** 5 lights ,5 power Points
- ✓ **Kitchenette includes:** Minimum 3 Star Accessories, sink with hot & cold flick-mixer tap, bench- top & base unit, cupboards & drawers.
- ✓ **All Hardware and Connections Pack:** Self tapping screws, bolts & Silicon sealers.
- ✓ **Flooring:** floating floorboards for common area and bedrooms, Tiles for wet area.
- ✓ **Wardrobe:** Robe & Linen cupboard supports in both of bedroom .
- ✓ **Engineered Certificate:** Engineers Certification for all structure if required at a cost.



What is the price?

This is the most commonly asked question, so we want to give you a realistic idea of what one may cost. We provide a base price for each of our floor plans on the specific page. We then have an options sheet which allows you to select various upgrades or, in some cases, remove certain items from the base unit. We have done our best to list these options on the floor plan pages as well. This will provide you with a fairly accurate cost of the final number of units, with the only variances based on any customizations you may require.

Can we have the option of buying DIY Kits ?

Yes, you do have the option of buying DIY Kits only.

Are they mobile? Can I transport them?

If it is a Glass Container Model design it would not be possible to be transportable, if it is a standard container model, yes they are transportable as they are made of Solid Steel Frames. A 17.70sqm model weights around 1.8 tonne to 2.5 tonne, and a 37.7 sqm around 3.5 tonne to 5 tonne each. These units are made to be transported, set in place, and stay put. This does not mean that you could not easily move them to a new location should you have the need or should you sell it. This will just require a call to your local transport company. What it does mean, however, is that this is not something you would likely do yourself on your own trailer.

Can two or more Container be put together on Site?

Yes you can put as many together to make one big accommodation, depending on your size and council approvals.

Can our models be customized?

Yes it can fully be customized to your required size and material choice.

Do you offer financing?

We can help direct you with your loans to professional people.

Are delivery and set-up included in the price?

Delivery can be arranged at a cost.



What about Set up?

Set-up is not included in the price. We can advise you, what will be required in terms of levelling, running services, etc. We can also discuss the various options for installing/securing the unit. You can then begin this work while we are constructing your container dwelling.

How are they heated and cooled?

Keeps warm in winter and cold in summer as they are designed to be highly energy efficient with a small cooler or heater.

What about codes and zoning?

Codes and zoning will differ depending on the city/county where the container dwelling will be placed, what it will be used for, and how it will be secured. In some cases it may be considered an outbuilding. In other cases it may be considered a home. In many counties and smaller towns, there may not be any zoning at all. The first thing we recommend is to contact your local council and discuss your plans

How long does it take to build one?

It takes between 2 to 6 weeks to build a custom container cabin, depending on the design and construction materials. Total time between order and delivery is dependent on the number of cabins being constructed. We can give you a more exact timeframe when you order your cabin.

How are the utilities hooked up?

The utilities (electric, water, sewer/septic) are connected the same as they would be in a normal house. Of course, we can customize this based on your need. If hooking to a generator, we can make sure you have the right connection for electric. We can also include gas lines for the hot water heater and stove if you plan to run propane. We discuss all of this with you when designing your container dwelling.

Do you offer solar?

Yes we do, we are currently working with a solar company and can easily tailor the units to be "solar ready". We can also work with them to deliver a full or partial off-grid quote specific to your situation.

How thick is a container? How are they constructed?

They are made of strong chassis steel frames and 50 mm insulated panels.



Benefits

Strength and Durability. containers can resist snow, wind, hurricanes, tornadoes and earthquakes.

Move in the same day. Our container are custom designed based on the specific usage requirements and preferences of the customer. They can be pre-plumbed, pre-wired, and delivered completely assembled. As long as the required services (water, electric, sewer/septic) are onsite, they can be set, secured, and hooked up the same day. You would be living in the container that evening!

Low maintenance. If you are interested in as little maintenance as possible, we offer metal and vinyl siding options. With metal siding and roof, there is little to no outside maintenance required. This is perfect for a lake cabin or hunting cabin where you do not want to spend your time maintaining the building when you are there to enjoy the time you have away. Also, with the full metal option you will never worry about having to replace boards or siding due to wood rot.

Termite and Insect resistant. The only wood found in the container itself is the flooring. It is 18mm thick with 19 ply plywood, treated to be weather and insect resistant, which is extremely important in the original purpose of shipping materials. The walls are solid steel so there is no surface for termites to eat. Also, due to the solid construction of the container, the only openings for pests of any kind to enter the container is through any openings cut into the container for doors and windows. All of these openings are insulated and caulked/siliconed to prevent weather and insects or rodents from entering. You can put one of these container cabins in the middle of the woods and be confident that it will not be destroyed by insects.

Made for transporting. Containers were specifically designed for transport. There are many tow and transport services which will pick up and deliver the containers. We can help you arrange delivery and placement of the container cabin on your site or you are free to contact your own transport service if you have your own contacts. You are also free to pick up the container cabin yourself if you have the equipment.

Another option, when looking at residing in the container dwelling and you do not yet own land, is to contact a local mobile home park and discuss placing your container home in the park. The advantage to this option is that all utility services are already present.