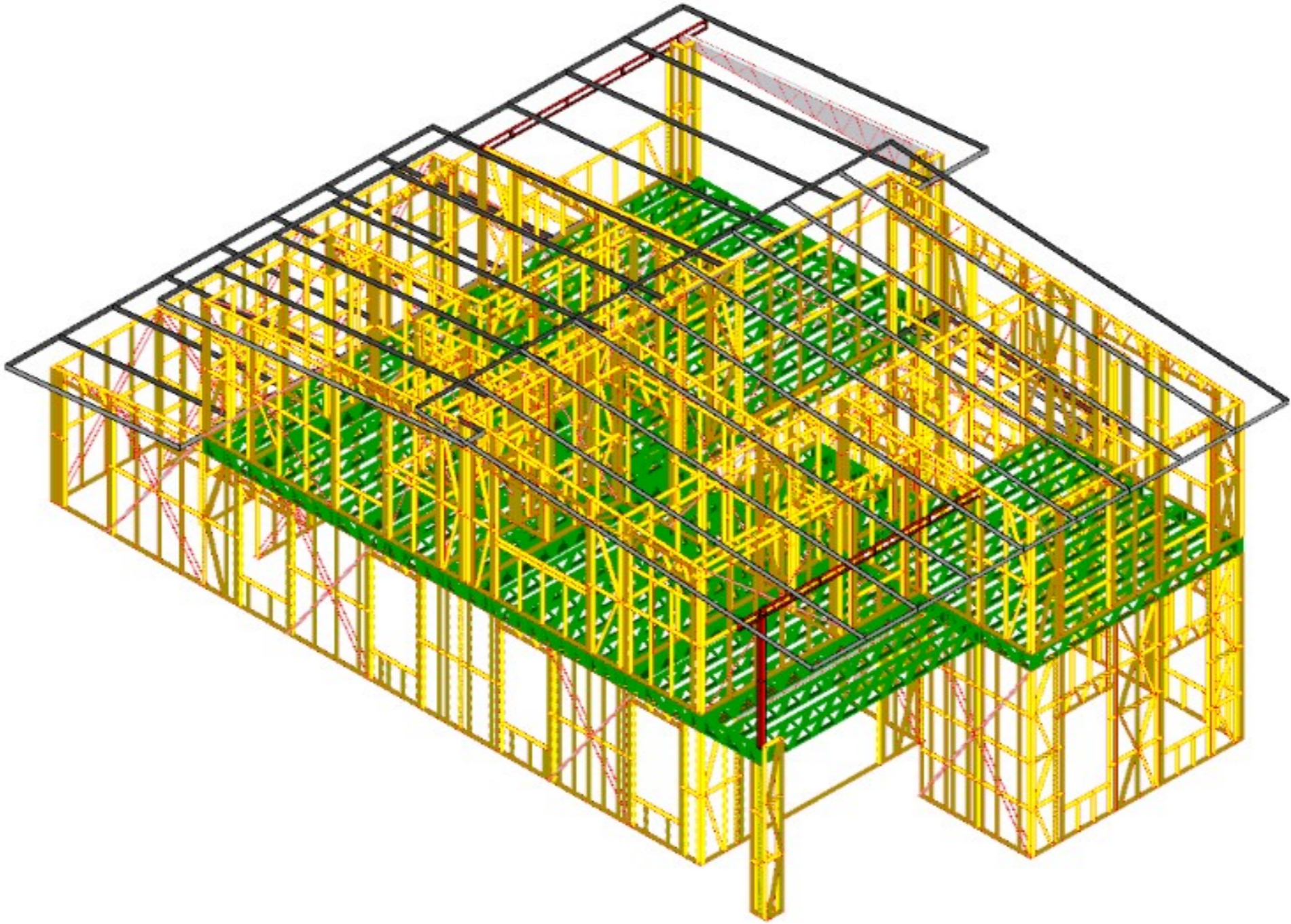
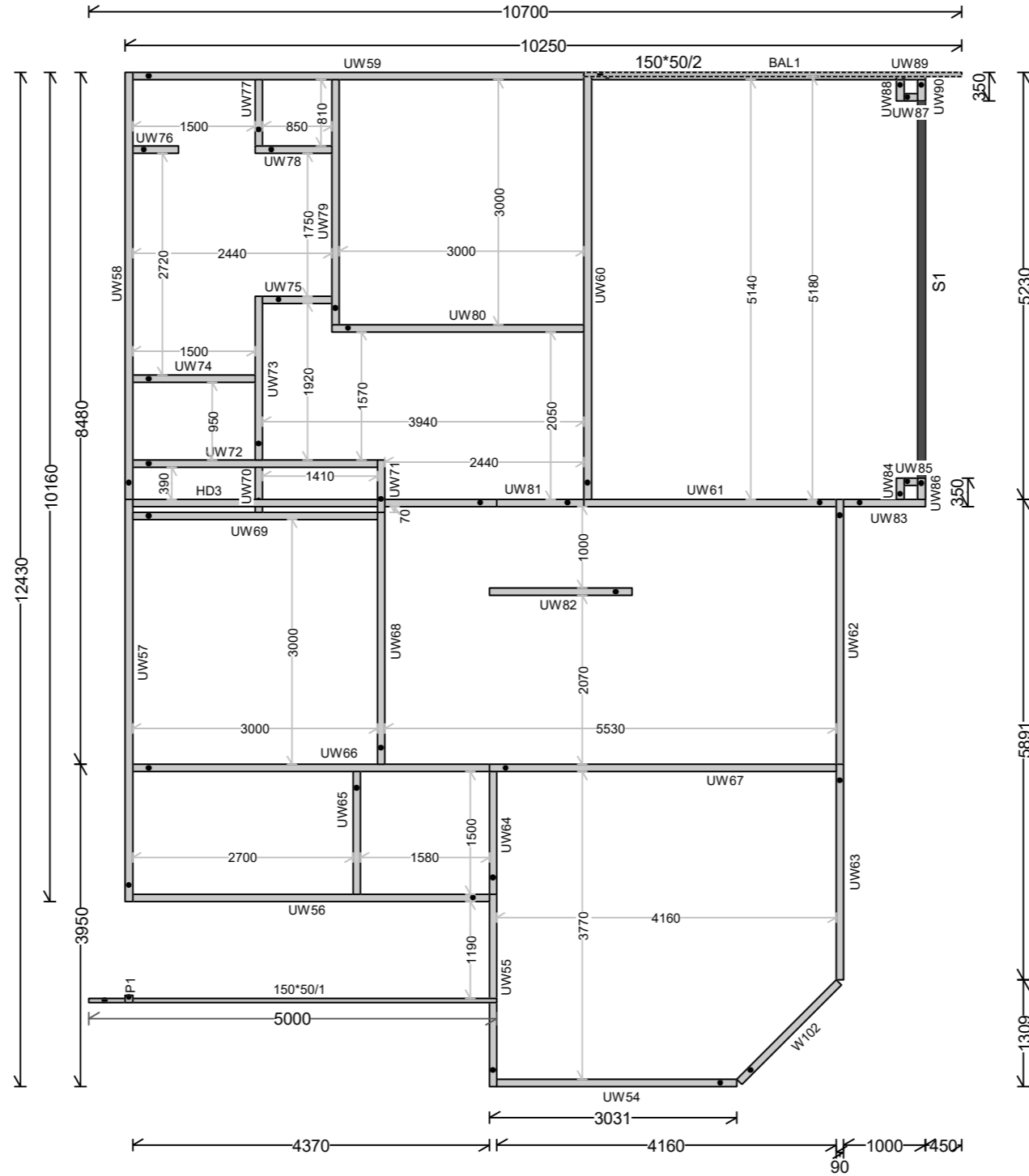


Sample Steel Frames: Assembly and Installation Guide for a Small Duplex House





Sample Steel Frames: Assembly and Installation Guide for a Small Duplex House



Walls (Level 1)						
Wall	Height	Gauge	Nog Spacing	Stud Spacing	Load Bearing	Double Verticals
HD1	300	C90_37-0.75BMT-G550	Even: 1200	Even: 450		
HD2	1029	C90_37-0.95BMT-G550	Even: 1200	Even: 450		
INFILL1	1000	C90_37-0.55BMT-G550	Even: 1200	Even: 450		
LW1	2590	C90_37-0.75BMT-G550	Even: 1350	Fixed @583, 600		
LW2	2590	C90_37-0.75BMT-G550	Even: 1350	Fixed @583, 600		
LW3	2590	C90_37-0.55BMT-G550	Fixed @1295, 1295, 1200	Even: 600		
LW4	2590	C90_37-0.55BMT-G550	Even: 1350	Even: 600		
LW5	3104	C90_37-0.75BMT-G550	Even: 1200	Even: 450		
LW6	3104	C90_37-0.75BMT-G550	Even: 1200	Even: 450		
LW7	3104	C90_37-0.75BMT-G550	Fixed @1065, 1065, 1065	Even: 450		
LW9	2590	C90_37-0.95BMT-G550	Even: 1350	Fixed @583, 600	Yes	
LW10	3104	C90_37-0.95BMT-G550	Even: 1200	Even: 450		
LW11	3618	C90_37-0.95BMT-G550	Even: 1200	Fixed @583, 600	Yes	
LW12	3618	C90_37-0.95BMT-G550	Even: 1200	Fixed @600, 600	Yes	
LW14	3618	C90_37-0.95BMT-G550	Even: 1200	Even: 450	Yes	
LW15	3618	C90_37-0.95BMT-G550	Even: 1200	Fixed @583, 600	Yes	
LW16	2590	C90_37-0.95BMT-G550	Even: 1350	Even: 450	Yes	
LW17	2590	C90_37-0.95BMT-G550	Even: 1350	Fixed @583, 600	Yes	
LW19	2590	C90_37-0.55BMT-G550	Even: 1350	Even: 450		
LW20	2590	C90_37-0.55BMT-G550	Even: 1350	Even: 450		
LW22	2590	C90_37-0.55BMT-G550	Even: 1350	Even: 450		
LW23	2590	C90_37-0.55BMT-G550	Even: 1350	Even: 450		
LW26	2590	C90_37-0.75BMT-G550	Even: 1350	Even: 600	Yes	Yes
LW28	2590	C90_37-0.95BMT-G550	Even: 1350	Fixed @583, 600		
LW29	2560	C90_37-0.55BMT-G550	Even: 1350	Even: 600		
LW30	2560	C90_37-0.55BMT-G550	Even: 1350	Even: 600		
LW31	2560	C90_37-0.55BMT-G550	Even: 1350	Even: 600		
LW32	2560	C90_37-0.55BMT-G550	Even: 1350	Even: 600		
LW33	2560	C90_37-0.55BMT-G550	Even: 1350	Even: 600		
LW34	2560	C90_37-0.55BMT-G550	Even: 1350	Even: 600		
LW36	2590	C90_37-0.55BMT-G550	Fixed @1295, 1295, 1200	Even: 600		
LW37	2590	C90_37-0.55BMT-G550	Even: 1350	Even: 600		Yes
LW38	2933	C90_37-0.75BMT-G550	Even: 1200	Even: 450		
LW39	2933	C90_37-0.75BMT-G550	Even: 1200	Even: 450	Yes	
LW40	3350	C90_37-0.75BMT-G550	Even: 1200	Even: 450		
LW41	2933	C90_37-0.75BMT-G550	Even: 1200	Even: 450		
LW42	4670	C90_37-0.75BMT-G550	Even: 1200	Even: 450		
LW43	3179	C90_37-0.75BMT-G550	Even: 1200	Even: 450		
LW44	4670	C90_37-0.75BMT-G550	Even: 1200	Even: 450		
LW45	3179	C90_37-0.75BMT-G550	Even: 1200	Even: 450		

Walls (Level 1)						
Wall	Height	Gauge	Nog Spacing	Stud Spacing	Load Bearing	Double Verticals
LW46	3179	C90_37-0.75BMT-G550	Even: 1200	Even: 450	Yes	
LW47	3179	C90_37-0.75BMT-G550	Even: 1200	Even: 450		
LW48	3179	C90_37-0.75BMT-G550	Even: 1200	Even: 450		
LW49	3179	C90_37-0.75BMT-G550	Even: 1200	Even: 450	Yes	
LW50	2665	C90_37-0.75BMT-G550	Even: 1200	Even: 450		
LW51	2665	C90_37-0.75BMT-G550	Even: 1200	Even: 450		
LW52	2665	C90_37-0.75BMT-G550	Even: 1200	Even: 450	Yes	
LW53	2665	C90_37-0.75BMT-G550	Even: 1200	Even: 450	Yes	
All Others	2590	C90_37-0.75BMT-G550	Even: 1350	Even: 450	Yes	

Roof Planes (Level 1)			
Name	Steel	Pitch	Rafter Spacing
Sandwich1		5	450
Sandwich2		5	1200



Walls (Level 2)					
Wall	Height	Gauge	Nog Spacing	Stud Spacing	Load Bearing
BAL1	1114	C90_37-0.55BMT-G550	Fixed @1295, 1295, 1295	Even: 600	
HD3	2590	C90_37-0.55BMT-G550	Fixed @1295, 1295, 1295	Even: 450	
UW54	2590	C90_37-0.75BMT-G550	Fixed @1295, 1295, 1295	Even: 600	
UW57	2590	C90_37-0.55BMT-G550	Fixed @1295, 1295, 1295	Fixed @583, 600	
UW58	2590	C90_37-0.55BMT-G550	Fixed @1295, 1295, 1295	Fixed @583, 600	
UW60	2590	C90_37-0.55BMT-G550	Fixed @1295, 1295, 1295	Fixed @583, 600	
UW62	2910	C90_37-0.95BMT-G550	Fixed @360, 1255, 1295	Fixed @583, 600	
UW63	2590	C90_37-0.75BMT-G550	Fixed @1295, 1295, 1295	Fixed @583, 600	
UW68	2590	C90_37-0.55BMT-G550	Fixed @1295, 1295, 1295	Fixed @583, 600	
UW71	2590	C90_37-0.55BMT-G550	Fixed @1295, 1295, 1295	Fixed @583, 600	
UW82	1050	C90_37-0.55BMT-G550	Fixed @1295, 1295, 1295	Even: 600	
UW83	2901	C90_37-0.55BMT-G550	Fixed @1295, 1295, 1295	Even: 600	
UW86	2440	C90_37-0.55BMT-G550	Fixed @1295, 1295, 1295	Even: 600	
UW89	2440	C90_37-0.55BMT-G550	Fixed @1295, 1295, 1295	Even: 600	
UW90	2440	C90_37-0.55BMT-G550	Fixed @1295, 1295, 1295	Even: 600	
W102	2590	C90_37-0.75BMT-G550	Even: 1400	Fixed @600, 600	
All Others	2590	C90_37-0.55BMT-G550	Fixed @1295, 1295, 1295	Even: 600	

Supports (Level 2)					
Support	Height	Gauge	Nog Spacing	Stud Spacing	Load Bearing
S1	2590	C90_37-0.95BMT-G550	Even: 1200	Even: 600	

Roof Planes (Level 2)			
Name	Steel	Pitch	Rafter Spacing
Sandwich3		5	1200
Sandwich4		5	1200

Floor Trusses (Level 2)				
Name	Steel	Span	Ply	
F1	C90_37-0.75BMT-G550	5.4	1	
F2	C90_37-0.95BMT-G550	5.4	1	
F3	C90_37-0.95BMT-G550	5.4	3	
F4	C90_37-0.95BMT-G550	5.4	1	
F5	C90_37-0.95BMT-G550	5.4	1	
F6	C90_37-0.95BMT-G550	5.4	1	
F7	C90_37-0.95BMT-G550	5.4	1	
F8	C90_37-0.95BMT-G550	5.4	3	
F9	C90_37-0.95BMT-G550	5.4	1	
F10	C90_37-0.95BMT-G550	5.4	1	
F11	C90_37-0.95BMT-G550	5.4	1	

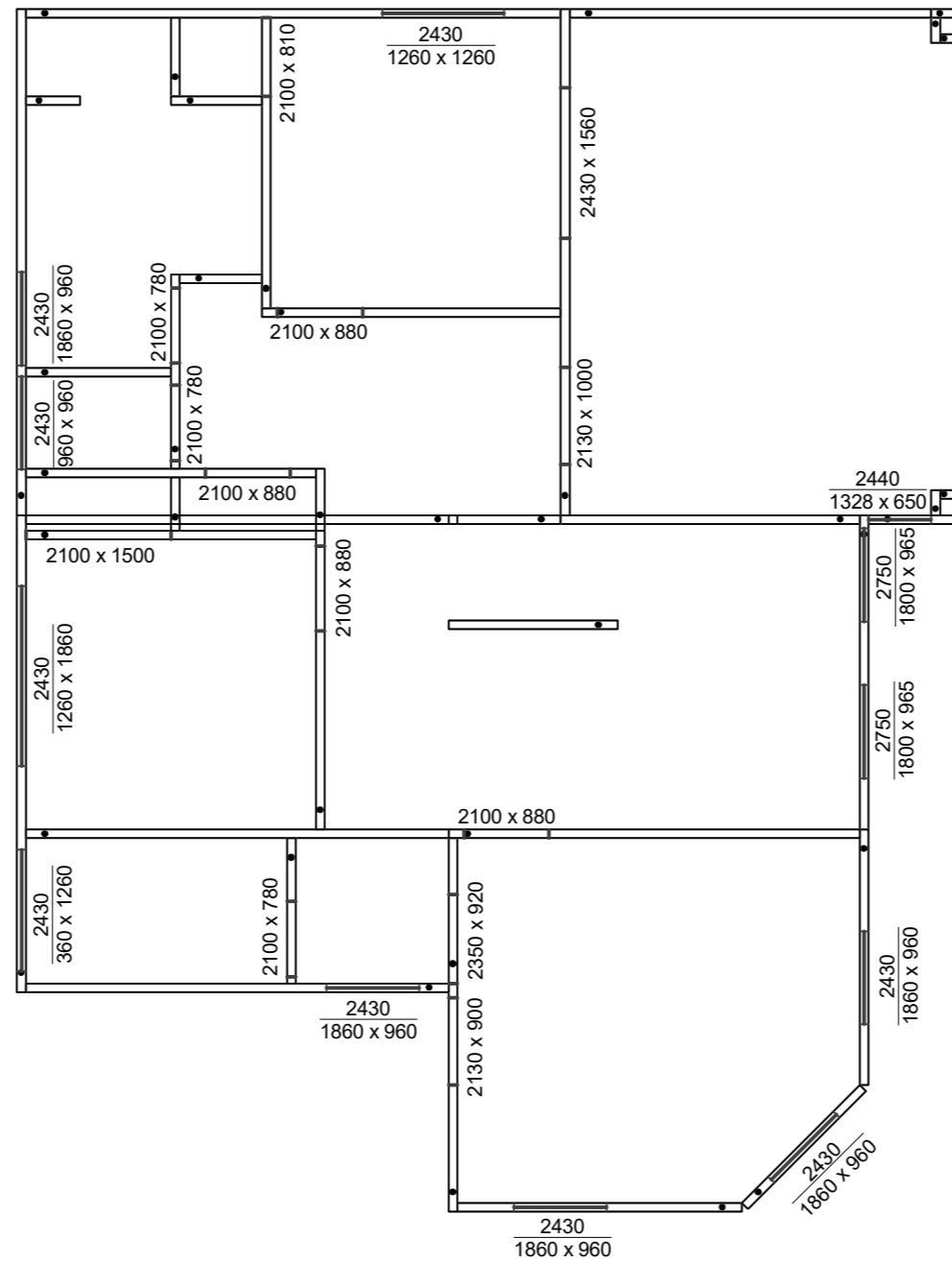
Floor Trusses (Level 2)				
Name	Steel	Span	Ply	
F12	C90_37-0.95BMT-G550	5.4	1	
F13	C90_37-0.95BMT-G550	5.4	1	
F14	C90_37-0.95BMT-G550	4.3	3	
F15	C90_37-0.95BMT-G550	5.3	1	
F29	C90_37-0.95BMT-G550	5.3	1	
F30	C90_37-0.95BMT-G550	5.3	1	
F31	C90_37-0.95BMT-G550	4.3	1	
F32	C90_37-0.95BMT-G550	4.3	1	
F33	C90_37-0.95BMT-G550	6	1	
F34	C90_37-0.95BMT-G550	1	1	
F35	C90_37-0.95BMT-G550	6	1	
F36	C90_37-0.95BMT-G550	6	1	
F37	C90_37-0.95BMT-G550	6	1	
F38	C90_37-0.95BMT-G550	6	1	
F39	C90_37-0.95BMT-G550	6	1	
F40	C90_37-0.95BMT-G550	6	1	
F41	C90_37-0.95BMT-G550	6	1	
F42	C90_37-0.95BMT-G550	2.2	1	
F43	C90_37-0.95BMT-G550	4.4	3	
F44	C90_37-0.95BMT-G550	4.4	1	
F45	C90_37-0.95BMT-G550	4.4	1	
F46	C90_37-0.95BMT-G550	4.4	1	
F47	C90_37-0.95BMT-G550	4.4	1	
F48	C90_37-0.95BMT-G550	4.4	1	
F49	C90_37-0.95BMT-G550	4.4	1	
F50	C90_37-0.95BMT-G550	4.4	1	
F51	C90_37-0.95BMT-G550	4.2	1	
F52	C90_37-0.95BMT-G550	4.2	1	
F53	C90_37-0.95BMT-G550	4.2	1	
F54	C90_37-0.95BMT-G550	4.2	1	
F55	C90_37-0.95BMT-G550	4.2	1	
F56	C90_37-0.95BMT-G550	4.2	1	
F57	C90_37-0.95BMT-G550	4	1	
F58	C90_37-0.95BMT-G550	3.5	1	
F59	C90_37-0.75BMT-G550	3.1	1	
F60	C90_37-0.75BMT-G550	2.9	1	
F61	C90_37-0.75BMT-G550	2.6	1	
F62	C90_37-0.95BMT-G550	3.9	1	
F63	C90_37-0.75BMT-G550	4.4	1	
F64	C90_37-0.95BMT-G550	6.1	1	

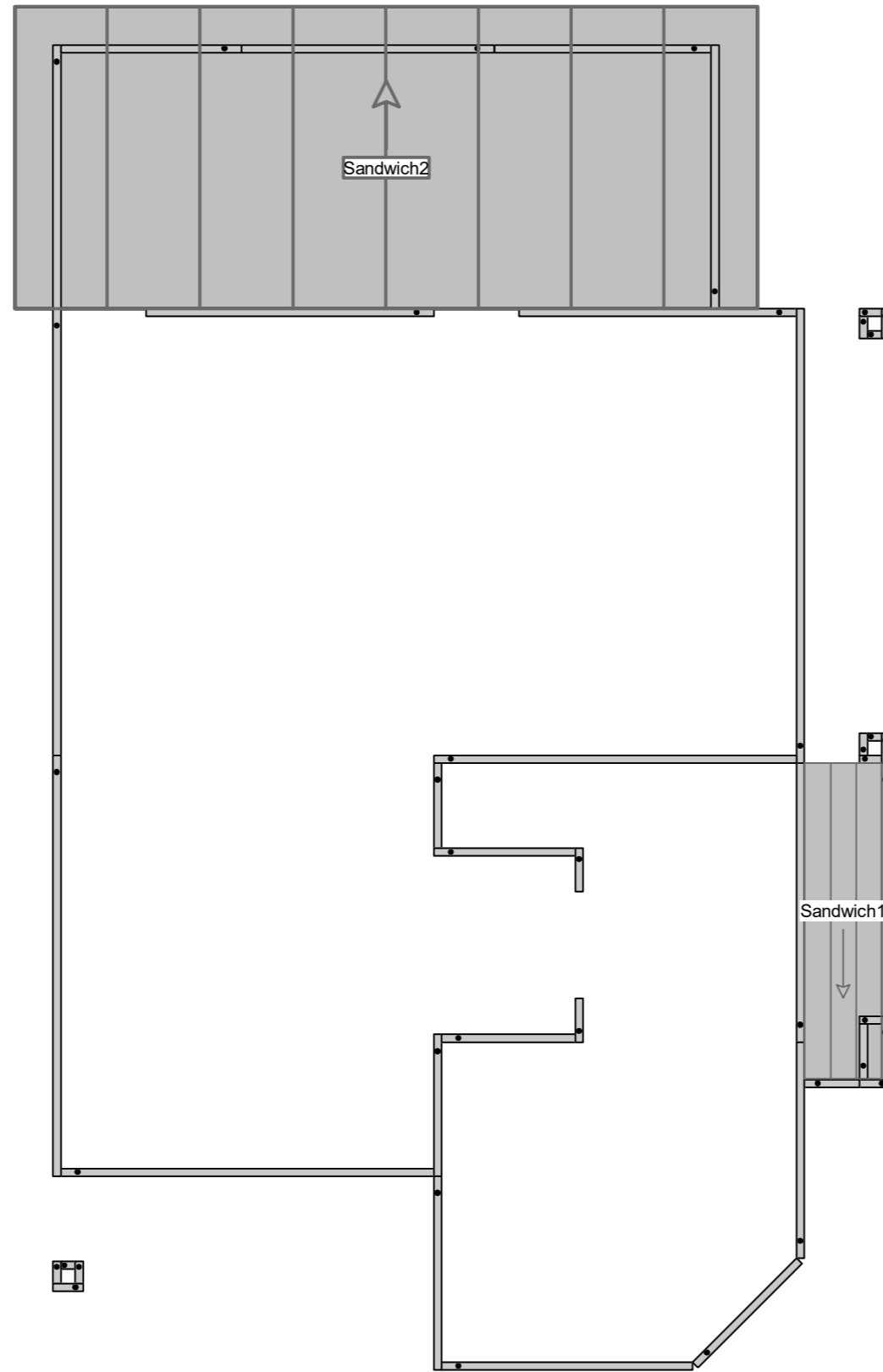
Floor Trusses (Level 2)				
Name	Steel	Span	Ply	
F65	C90_37-0.95BMT-G550	5.4	1	
F66	C90_37-0.95BMT-G550	5.4	1	
F67	C90_37-0.75BMT-G550	1.7	1	
All Others	C90_37-0.75BMT-G550	4.2	1	





Sample Steel Frames: Assembly and Installation Guide for a Small Duplex House

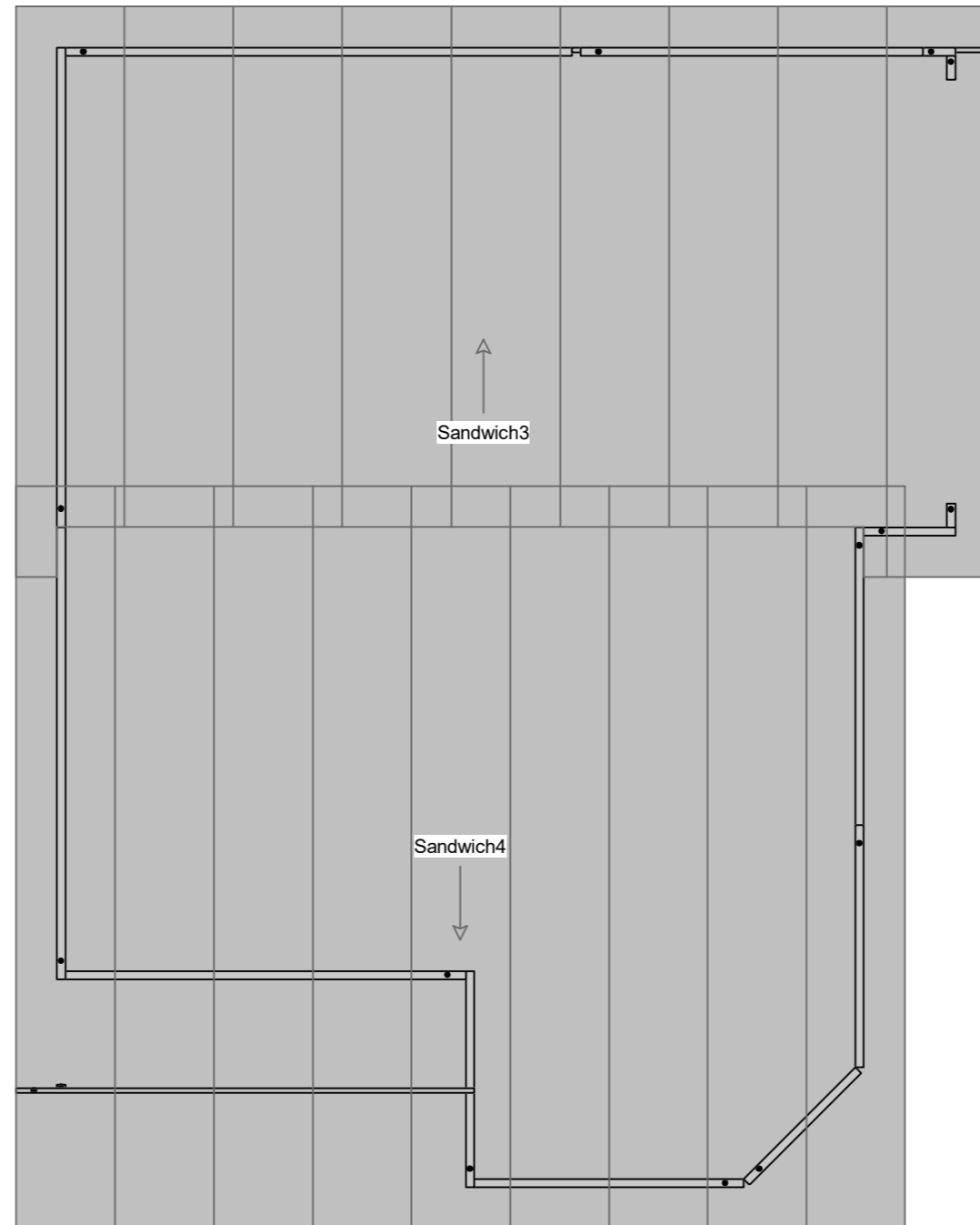




Sample Steel Frames: Assembly and Installation Guide for a Small Duplex House

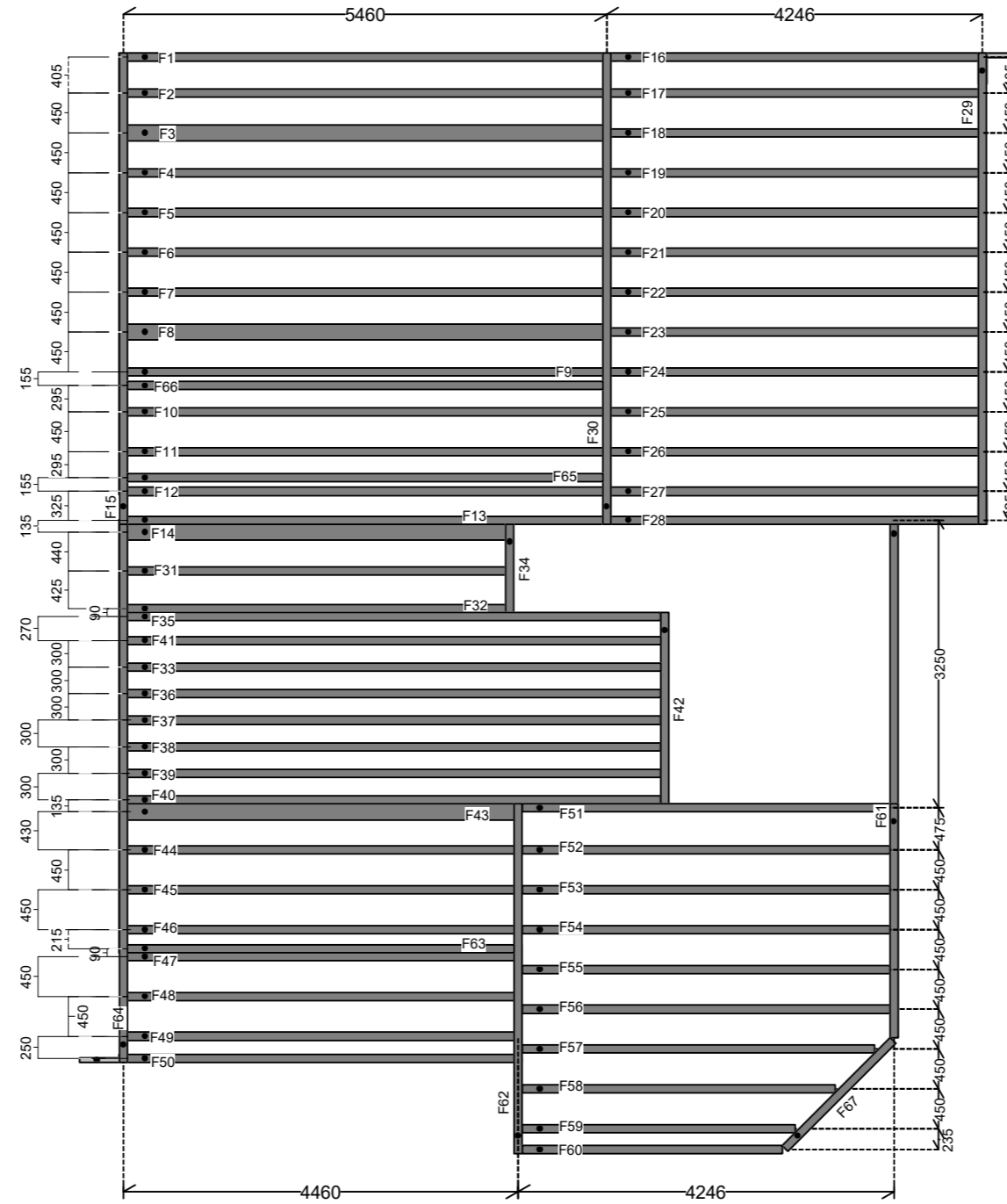


Sample Steel Frames: Assembly and Installation Guide for a Small Duplex House

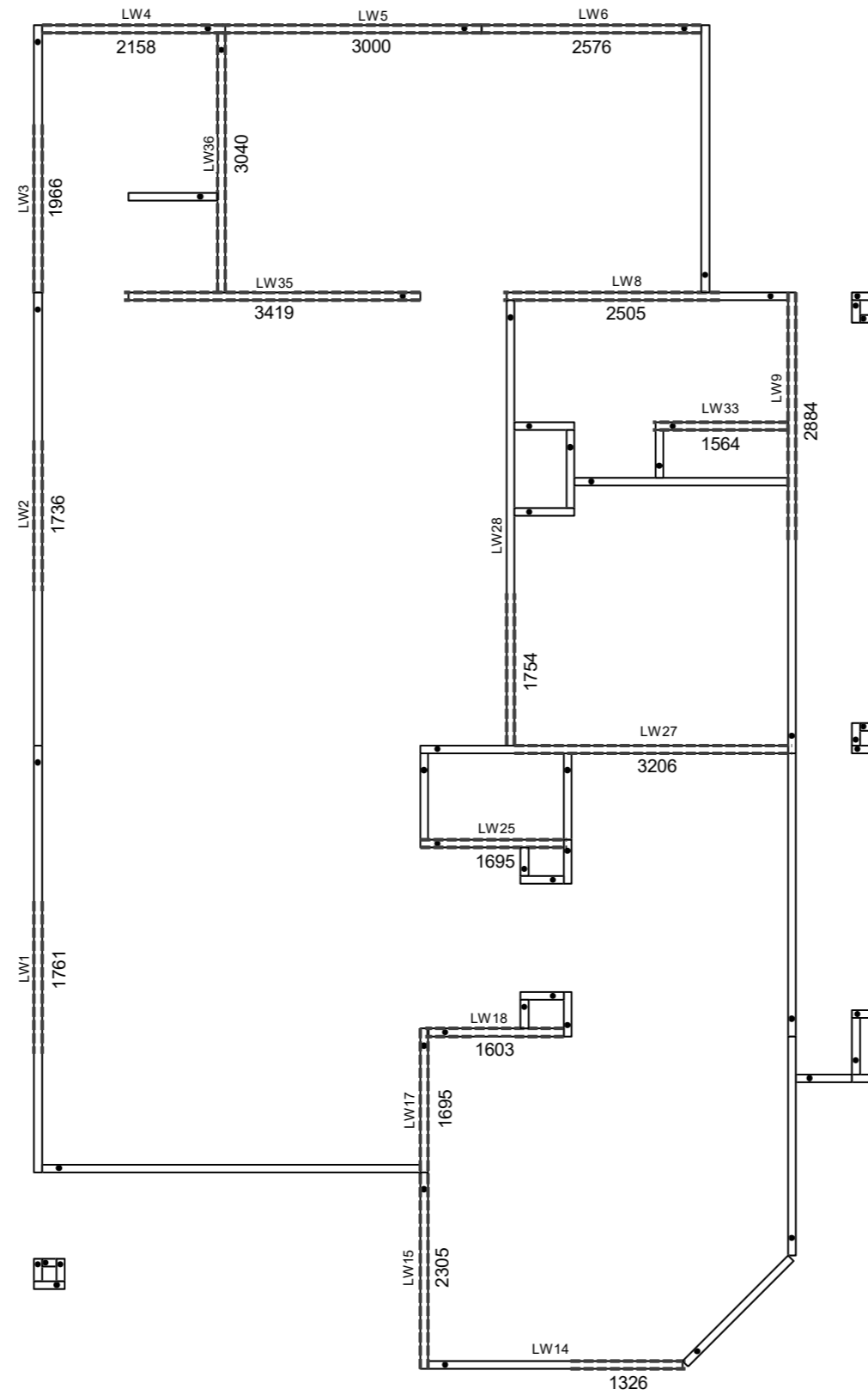




Sample Steel Frames: Assembly and Installation Guide for a Small Duplex House



Sample Steel Frames: Assembly and Installation Guide for a Small Duplex House





Sample Steel Frames: Assembly and Installation Guide for a Small Duplex House

