



**PUT A LITTLE SPARK IN
YOUR LIFE**

Granny Flat Kit Home - Plan 29

1 Bedrooms - Size : 28.2 m2

Office/Factory/Warehouse,
Unit 3, 13 McCormack Street, Arndell Park NSW 2148, Australia
www.sparkhomes.com.au , www.sparkbusinessgroup.com.au |
Email: enquiry@sparkbusinessgroup.com.au Tel: (02) 8807 4717 | ABN 18161539407

**PUT A LITTLE SPARK IN
YOUR LIFE**

Granny Flat Kit Home - Plan 29

1 Bedrooms - Size : 28.2 m2



EPS FULLY PREFABRICATED, INSULATED FULL KIT - \$30,000 + GST

STEEL/ TIMBER FULL KIT (WITH GYPROCK AND CLADDING) - \$24,000+ GST

STEEL/TIMBER FRAME KIT (WITH EXTERIOR DOORS & WINDOWS ONLY) - \$19,500 + GST

Office/Factory/Warehouse,
Unit 3, 13 McCormack Street, Arndell Park NSW 2148, Australia
www.sparkhomes.com.au , www.sparkbusinessgroup.com.au |
Email: enquiry@sparkbusinessgroup.com.au Tel: (02) 8807 4717 | ABN 18161539407



Granny Flat Kit Home - Plan 29

Floor Metric Sizes

Total Area: 28.2 m²
Width of home : 3.180 meters
Depth of Home: 8.950 meters

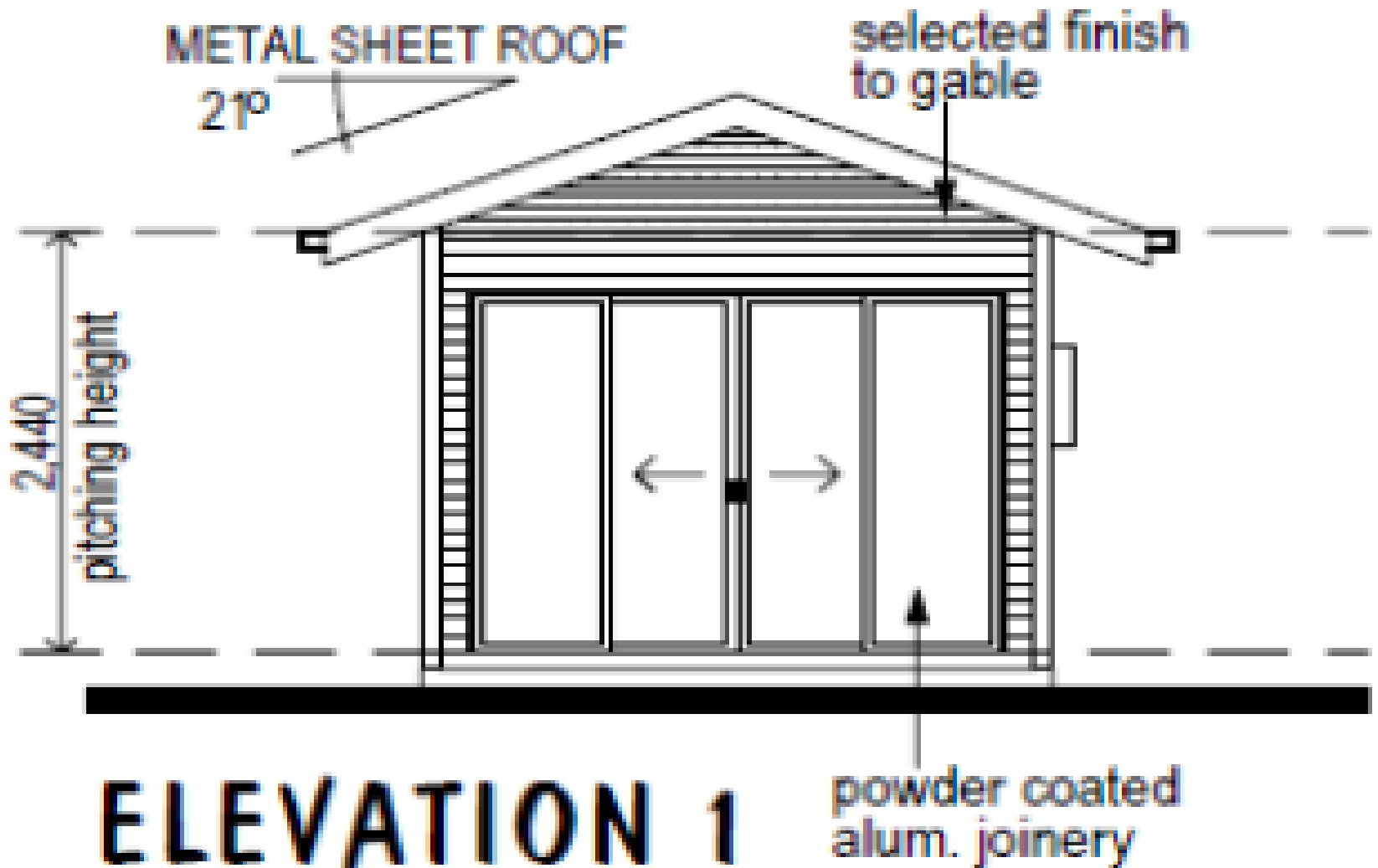
Plan Features

**1 Bedroom, 1 Bathroom,
Transportable Design, Living/Kitchen Area**



Office/Factory/Warehouse,
Unit 3, 13 McCormack Street, Arndell Park NSW 2148, Australia
www.sparkhomes.com.au , www.sparkbusinessgroup.com.au |
Email: enquiry@sparkbusinessgroup.com.au Tel: (02) 8807 4717 | ABN 18161539407



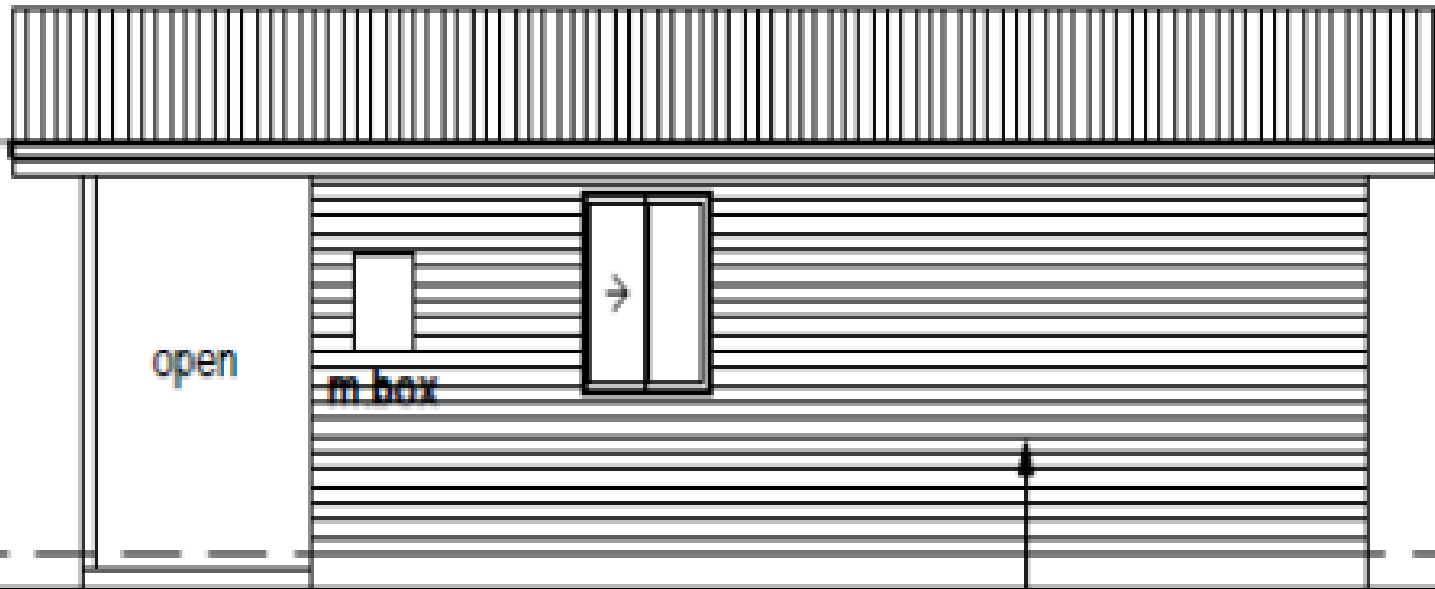


ELEVATION 1

SCALE 1:100

Office/Factory/Warehouse,
Unit 3, 13 McCormack Street, Arndell Park NSW 2148, Australia
www.sparkhomes.com.au , www.sparkbusinessgroup.com.au |
Email: enquiry@sparkbusinessgroup.com.au Tel: (02) 8807 4717 | ABN 18161539407

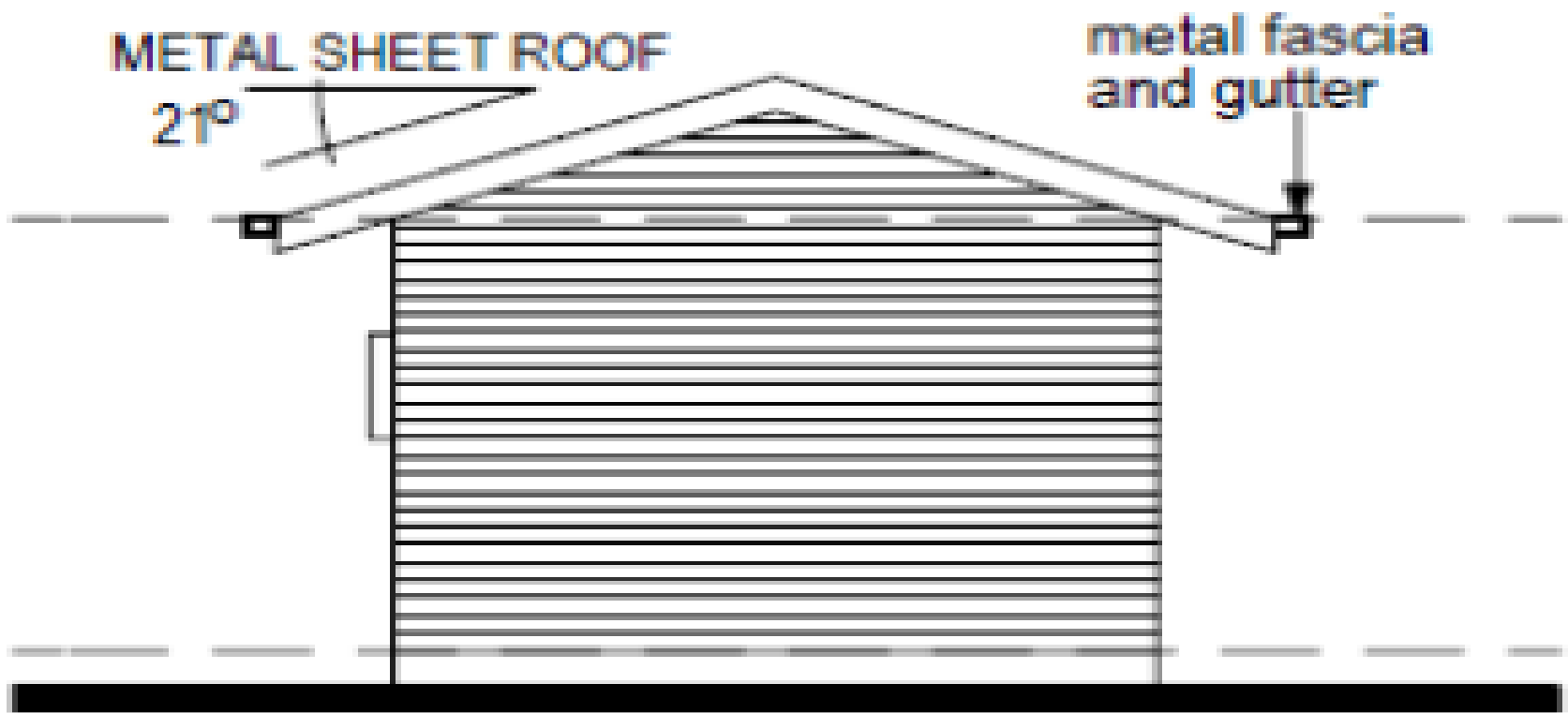
450



ELEVATION 2

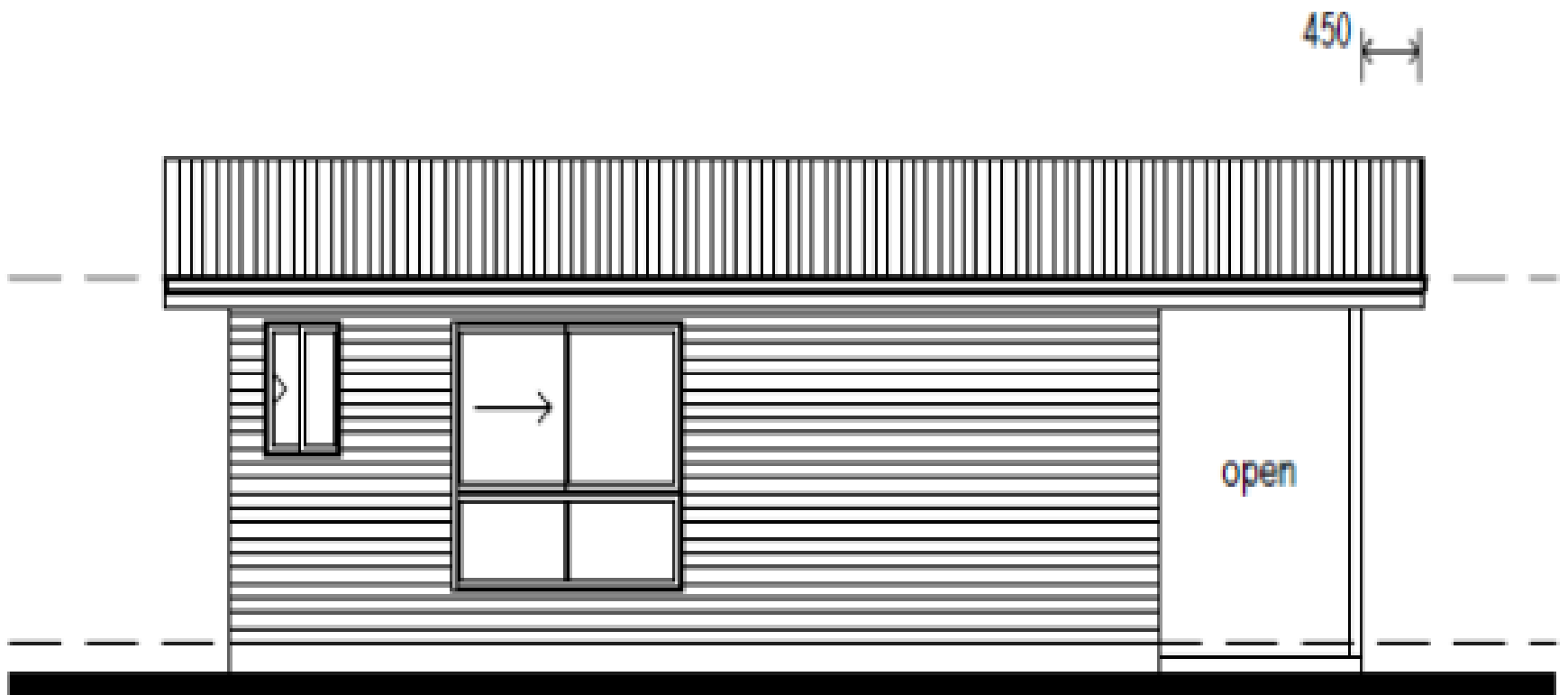
SCALE 1:100

plank style cladding
to manuf. spec.



ELEVATION 3

SCALE 1:100



ELEVATION 4

SCALE 1:100